

“The Vilnius Gediminas technical university”
“The international conference
"Electrical, electronic and information sciences""
the 22nd of April 2021 y.

The theme of scientific report
*“The features of the electronic card
for the automated training system
with the properties of adaptation
based on the cognitive models”*
The section “Information systems”

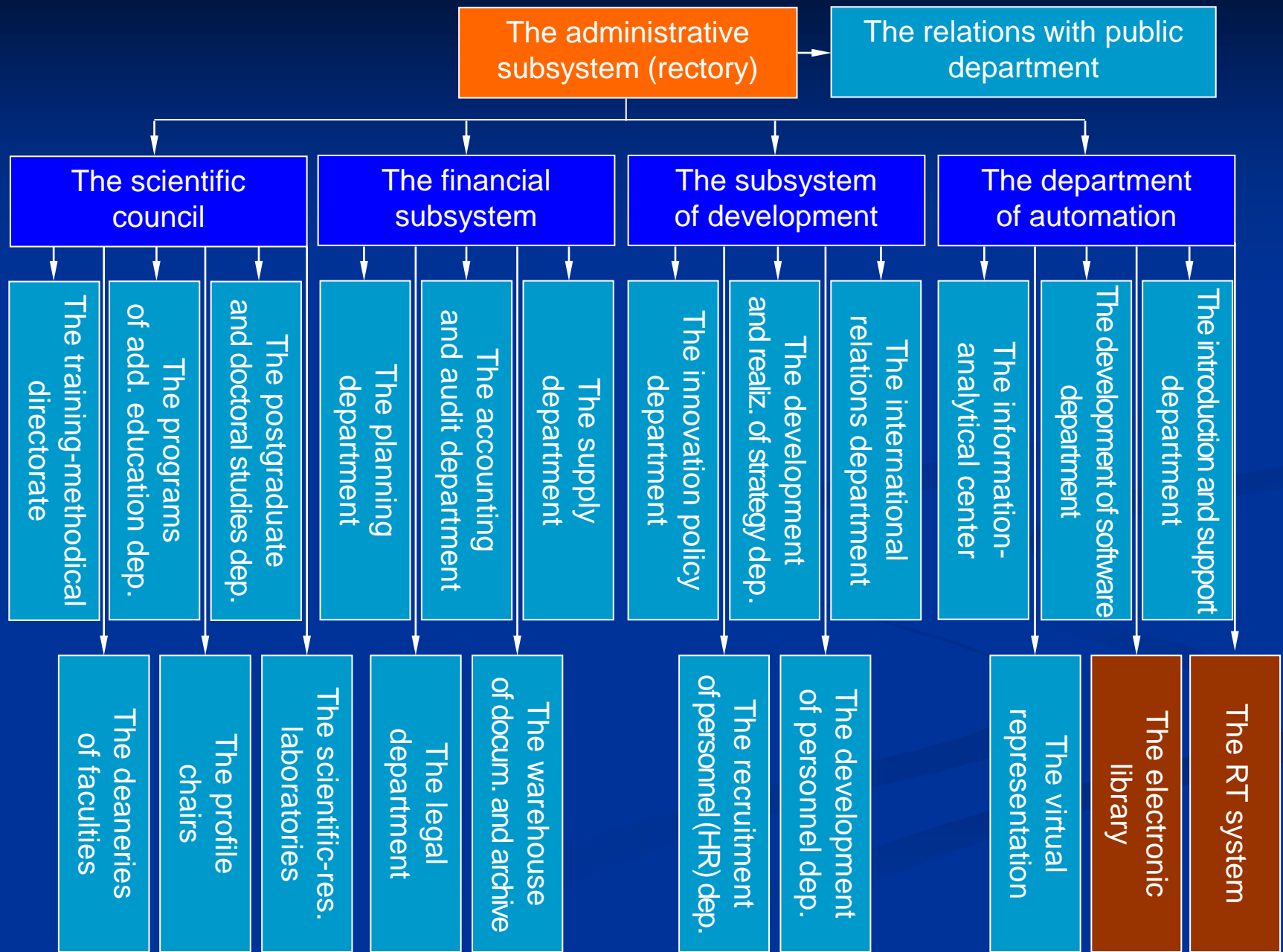
The reporter: “the author of the unique technology” of cognitive modeling
for the system, financial and complex analysis”,

The President of “SIO "Academy of cognitive natural sciences"”

Vetrov Anatoly Nikolaevich (The Russian Federation, Saint-Petersburg city)

The republic of Lithuania, Vilnius city, 2021 y.

The features of the organizational structure of the educational establishment at the informatization of the information-educational environment



The genesis and tendencies of development of the storages of information and the electronic cards of memory

The storage of information
based on the punched-cards

The storage of information
based on the punched-tapes

On the paper carrier (196x y.)

STR – Streamer
(the storage of information
based on the magnetic tape)

FDD – Floppy Disc Drive
(the storage of information
on the floppy magn. discs)

HDD – Hard Disc Drive
(the storage of information
on the hard magn. discs)

On the magn. carrier (197x y.)

CD-ROM – Compact Disc
Read Only Memory
(the laser storage of inf.
on the optical discs)

CD-R – Compact Disc
Recordable (the opt. disc
of the single-time technol.
cycle of record of the inf.)

CD-RW – Compact Disc
ReWritable (the opt. disc
of the multi-time technol.
cycle of record of the inf.)

DVD-ROM – Digital Video
Disc Read Only Memory
(the laser storage of inf.
on the optical discs)

SS/DS –
Single Side/Double Side
(one-/ two-sided)

SL/DL –
Single Layer/Double Layer
(one-/ two-layered)

On the opt. carrier (198x y.)

Flash (external) and Edrive
(internal) (the storage
of information based on
the electronic cards of memory)

SD – Secure Digital Card/
MS – Memory Stick Card
(the external port. storage of inf.
on the el. cards of memory)

On the electronic carrier (199x y.)

SMART – System
Monitoring and Alerting
(the storage of inf.
based on the chip-cards)

TOUCH/PROXIMITY
(the storage of inf.
based on the electronic cards
for the control of access)

the storing of parameters of the param. cognitive models block and others for the authentication of user in the automated training system based on PCMB

the storing of the profile of user for the realization of the wandering profile with the purpose of work in any place – the parameters of OS, programs, desktop and folder "My documents"

1. "SMART-card"

2. "FLASH-card"

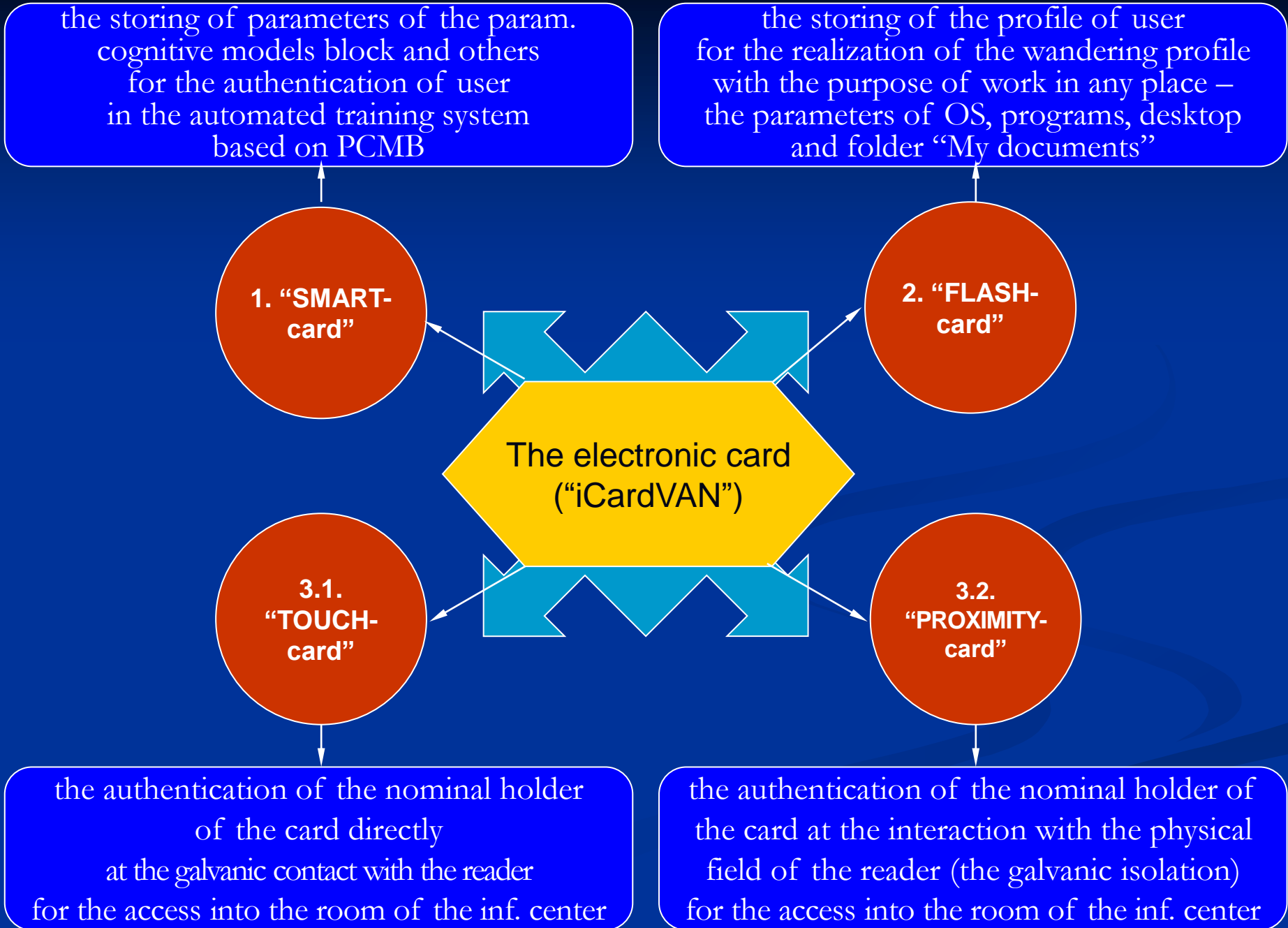
The electronic card ("iCardVAN")

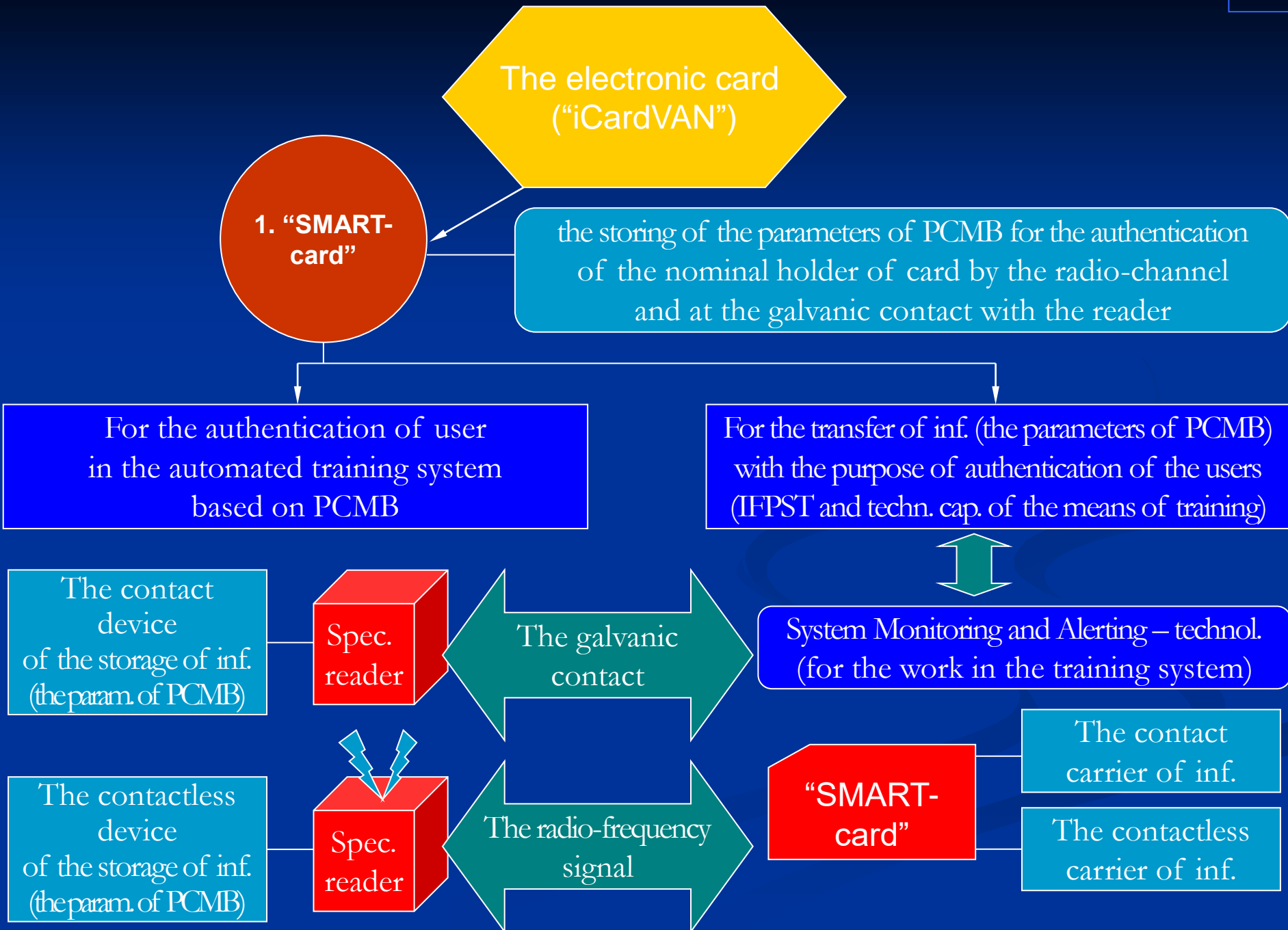
3.1. "TOUCH-card"

3.2. "PROXIMITY-card"

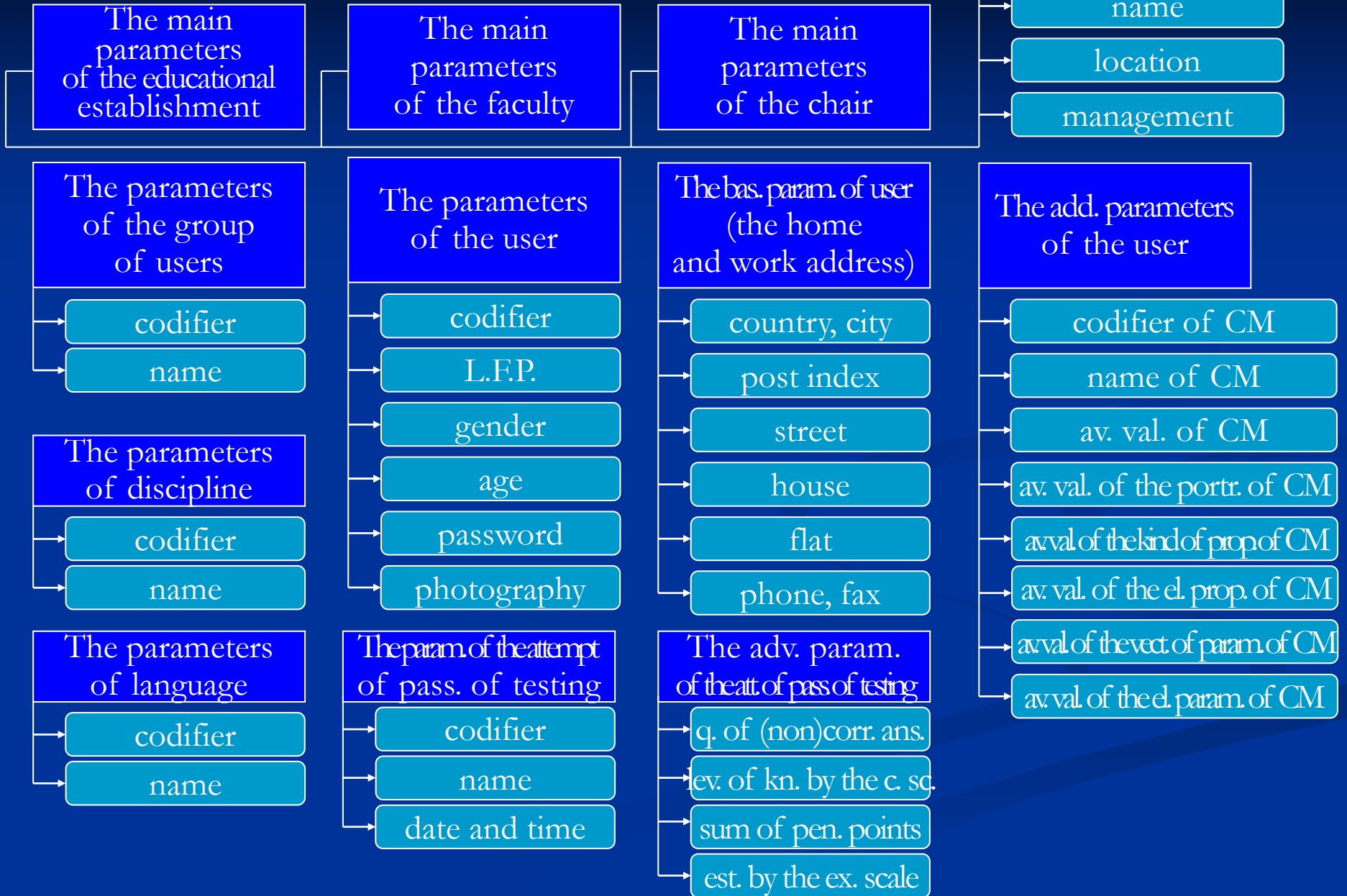
the authentication of the nominal holder of the card directly at the galvanic contact with the reader for the access into the room of the inf. center

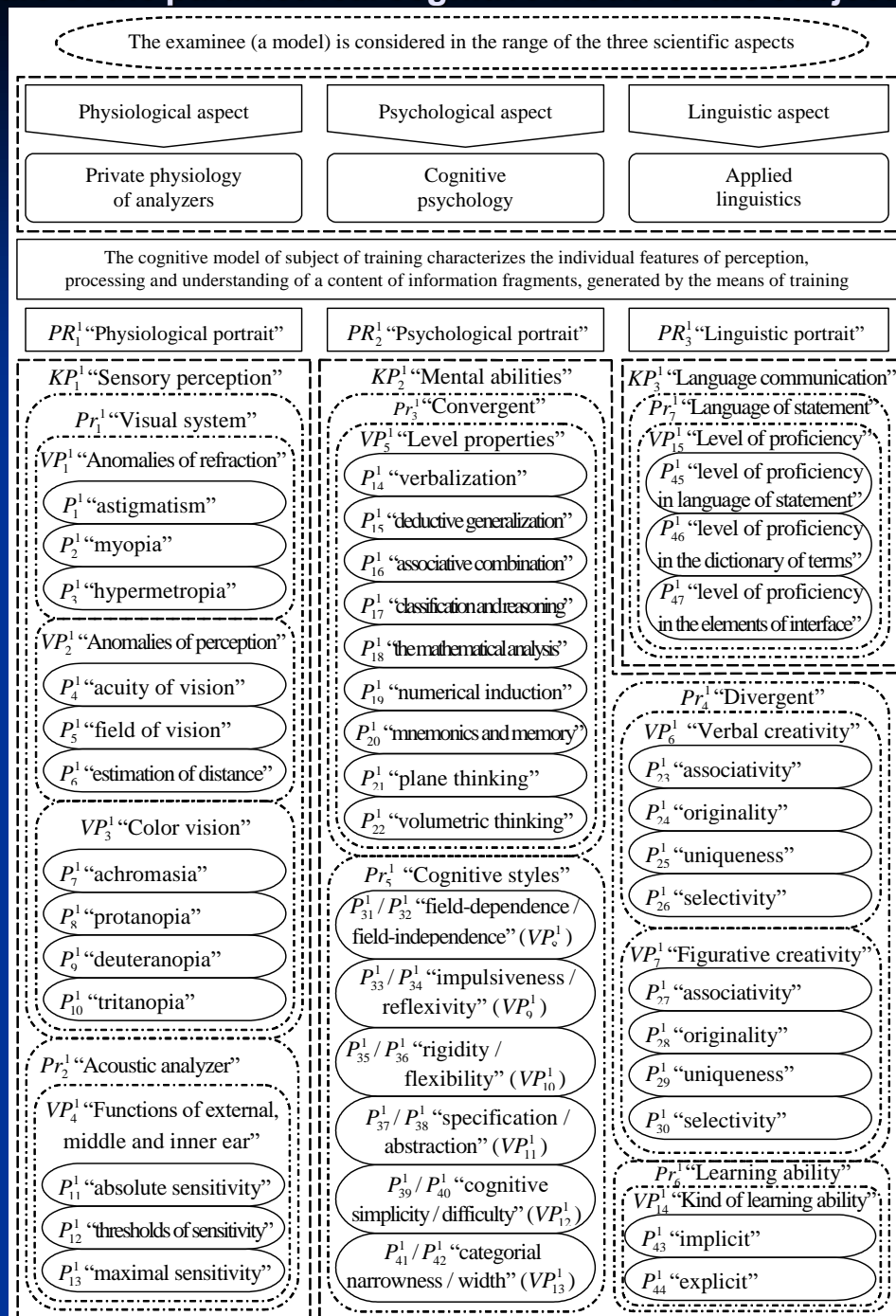
the authentication of the nominal holder of the card at the interaction with the physical field of the reader (the galvanic isolation) for the access into the room of the inf. center

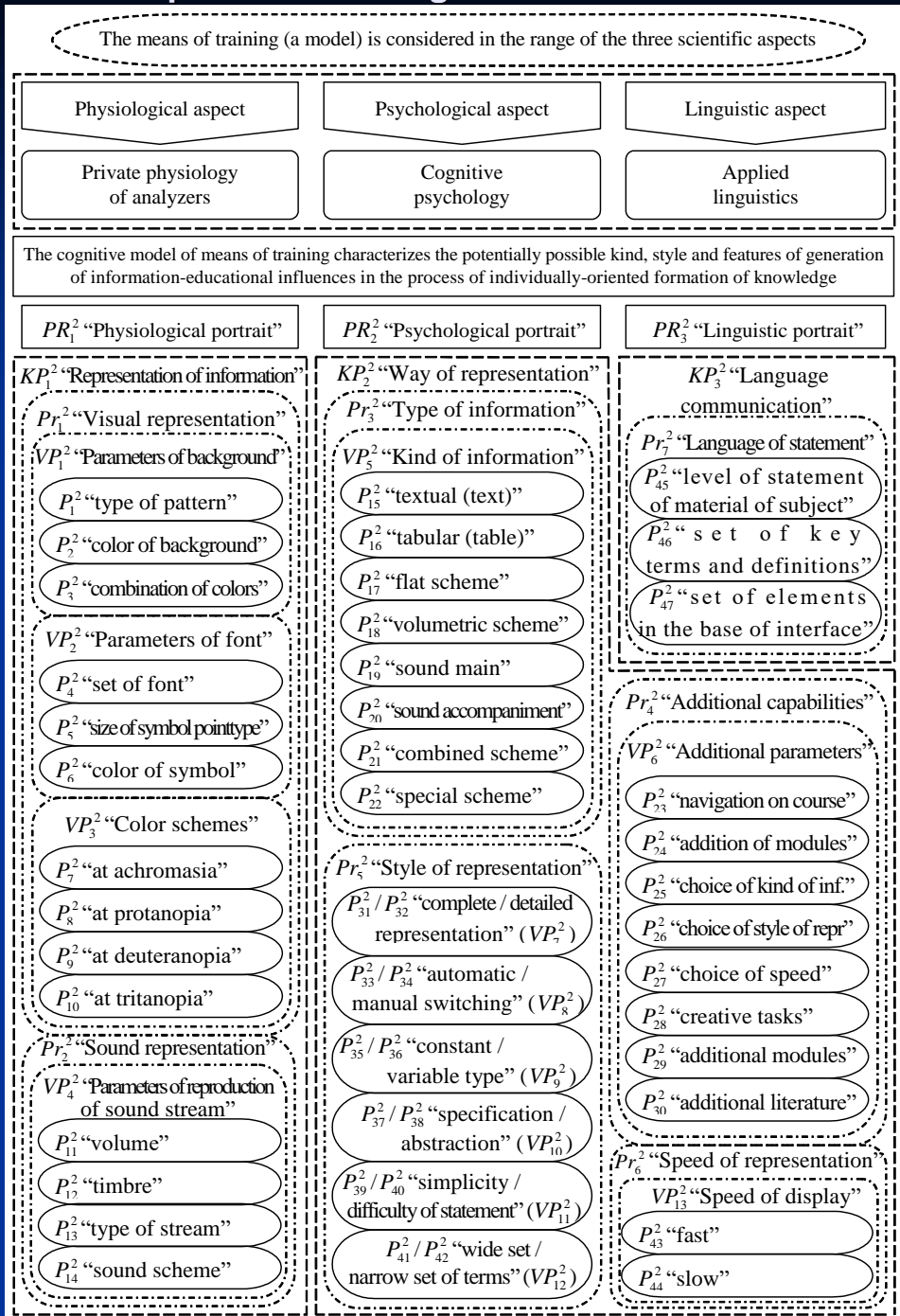


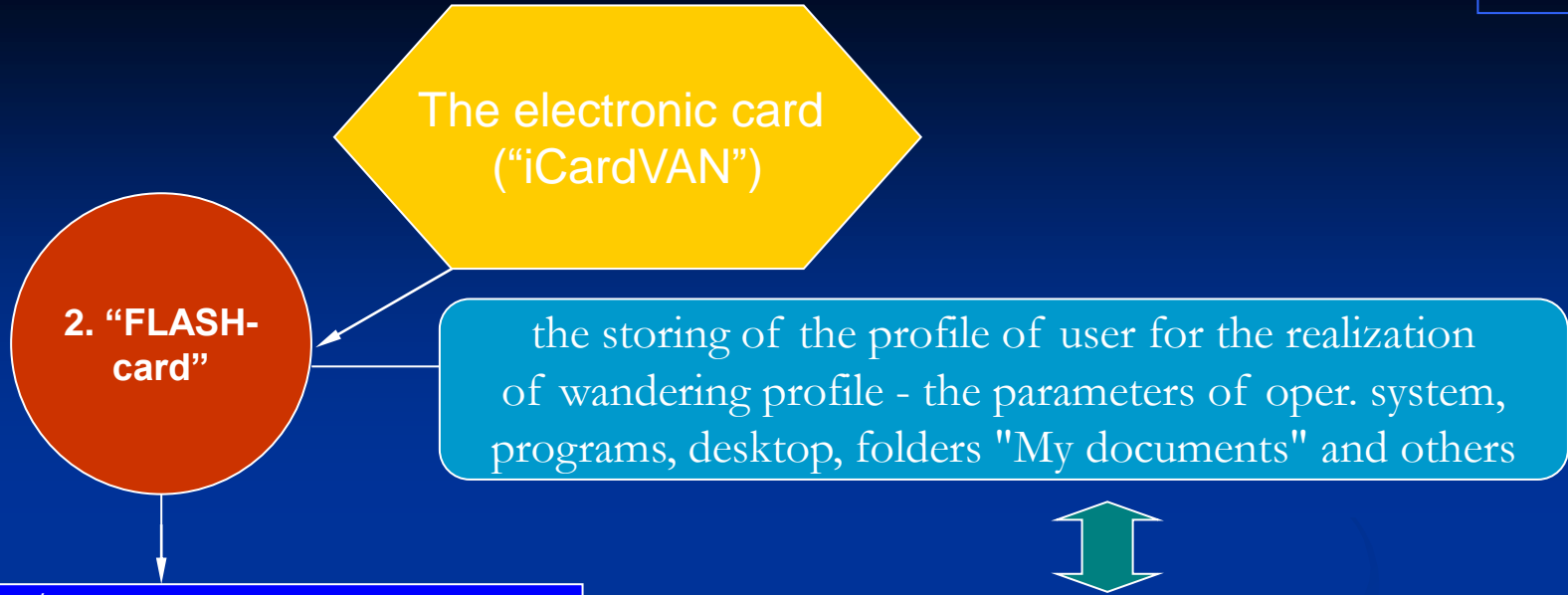


The parameters of the educ. establishment









For the reading / writing of inf. and the working of user in the system of autom. training based on PCMB and any other places (the place of residence and the place of work)

Electrically Erasable Programmable Read Only Memory Flash – technol. (for the work in any place)

